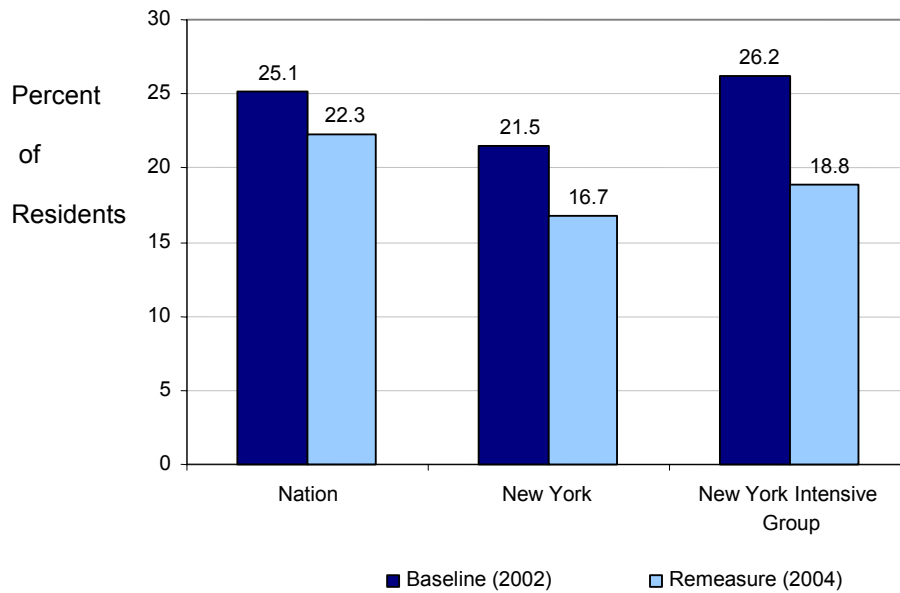


***Figure 1***  
***Percent of Short-Stay Residents with Pain***



***Figure 2***  
***Improvement Between 2002 and 2004: National, NY and NY Intensive Group***

| Measure                               | 2002     |                |                          | 2004     |                |                          |
|---------------------------------------|----------|----------------|--------------------------|----------|----------------|--------------------------|
|                                       | National | New York (All) | New York Intensive Group | National | New York (All) | New York Intensive Group |
| % of Residents with Pain              | 10.7     | 8.5            | 10.2                     | 6.6      | 4.3            | 3.7                      |
| % of Short-Stay Residents with Pain   | 25.1     | 21.5           | 26.2                     | 22.3     | 16.7           | 18.8                     |
| % of Residents in Physical Restraints | 9.7      | 7.3            | 7.0                      | 7.5      | 4.9            | 4.3                      |